

Through 26 simulation modules, users are able to approach step by step training from Aircraft Walk Around to the internal cockpit control in every aspect of B737-800. Moreover the simulation content focus on the position introduction of every control panel and component parts in terms of the operation method and control theory. It is an ideal solution for beginners who intend to enter the world of aviation. Not only for training in school but also for self-studying.

\* The pictures above are for reference only.  
The real products purchased should be considered as final.

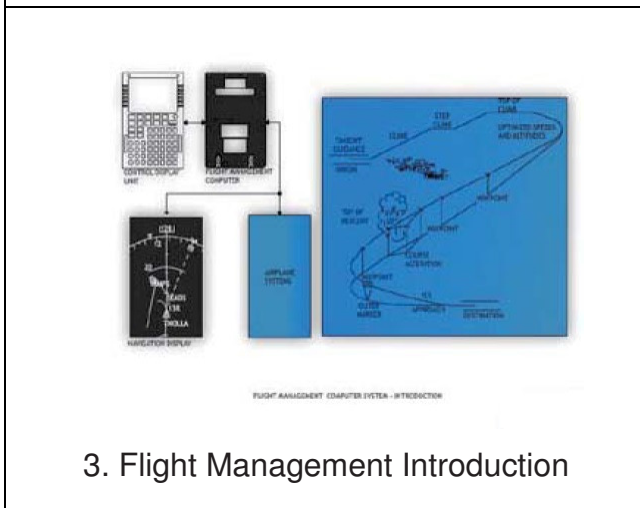
The software includes Mechanical Engineering (ME) and Avionics (AV), the module contents are as followed:



1. Aircraft Walk Around



2. Aircraft General



3. Flight Management Introduction



4. Flight Instruments



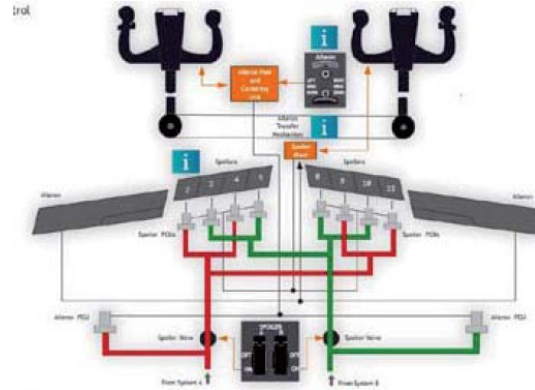
**737NG Flight Director Description**

The EDPS-733 is an enhanced fully digital, full operational autopilot flight director system. The dual system, part of the Boeing 737NG flight control system, performs basic functions associated with flight director commands, speed selector, altitude selection, heading selection, roll select, yaw select, autothrottle and system fault detection.

The EDPS-733 provides Dual Channel Autoland to CAT III and autothrottle controller rollout. The EDPS-733 has been the standard in-flight flight director system for all Boeing 737NG series of aircraft since January 2003.

The EDPS-733 autopilot flight director system consists of the following equipment:

5. Flight Director



6. Flight Controls



Click on the Hotspot to continue..

7. AC Communications



8. Navigation



Info.

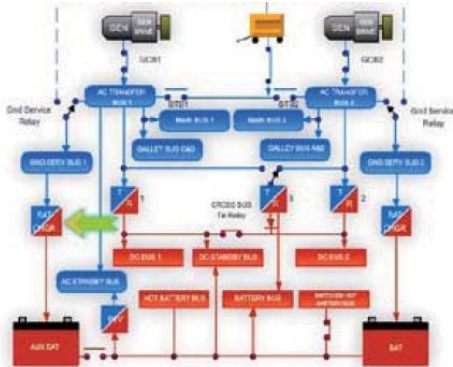
Click on the hot spot for information.

Previous

9. Autopilot



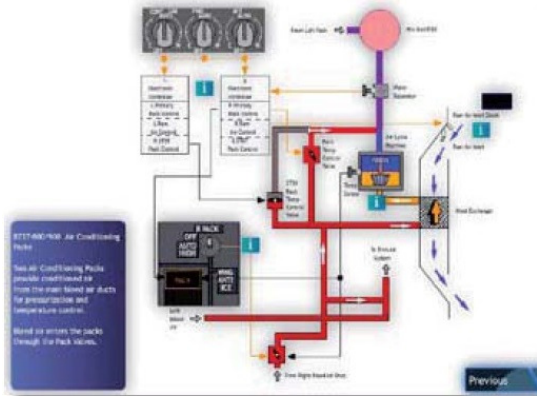
10. Auto Throttles



11. Electrical



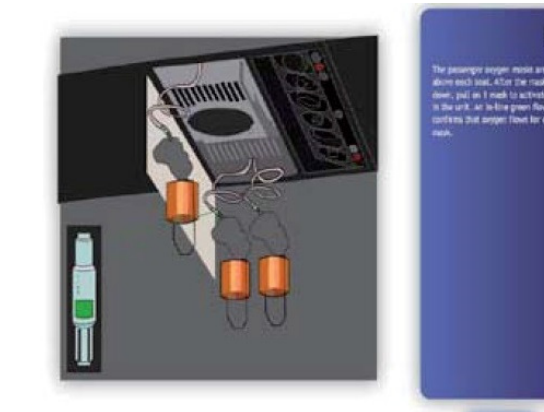
12. Fuel



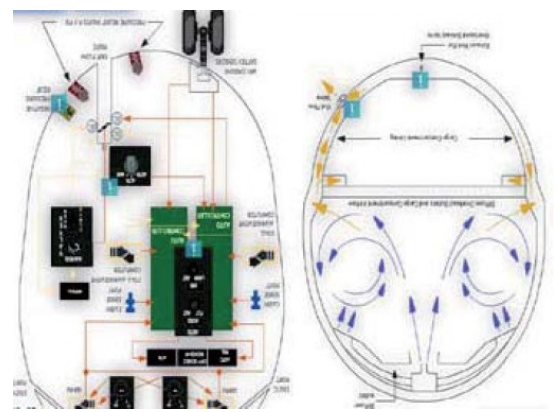
13. Air Conditioning



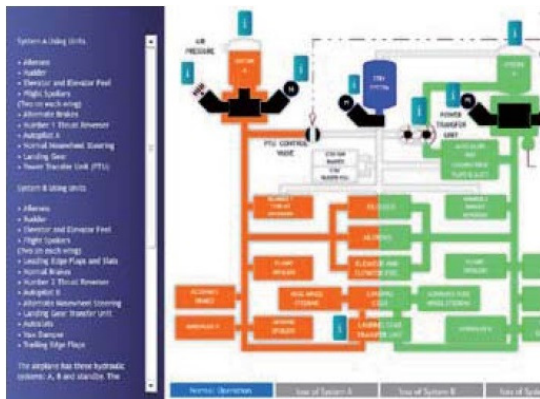
14. Lighting



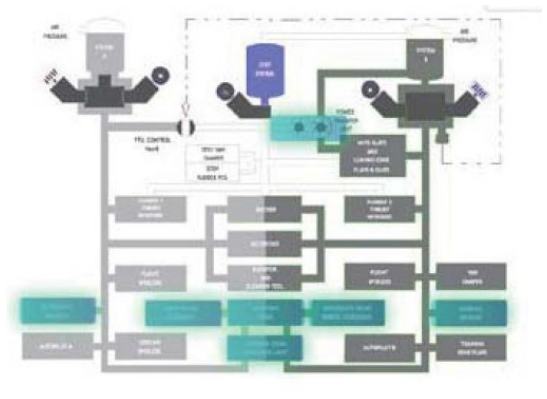
15. Oxygen



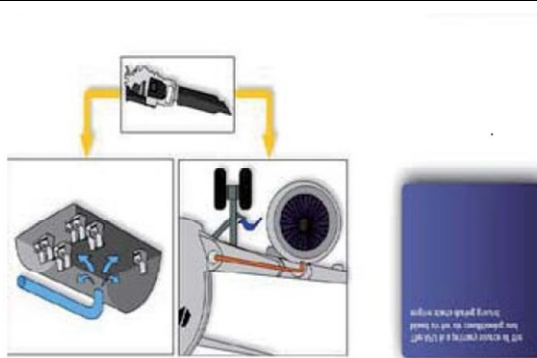
16. Pressurization



17. Hydraulics



18. Landing Gear-Brake



19. Pneumatics



20. Propulsion

